

Institut des Sciences Moléculaires d'Orsay

Location

Orsay, FR

Client

Université Paris Sud

Initiated

2012

Completion

2015

Size

10.000 sqm

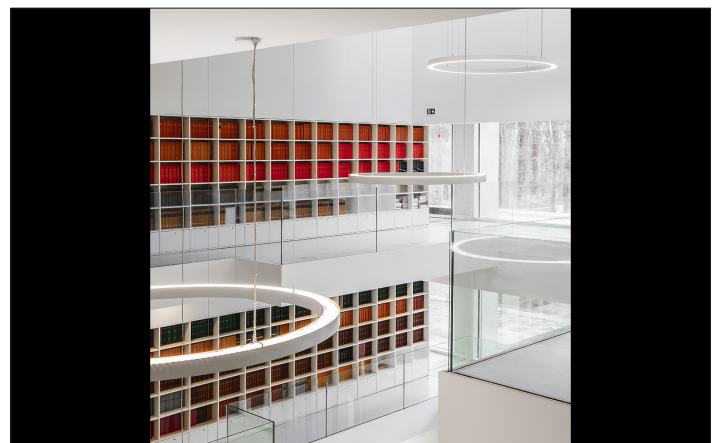
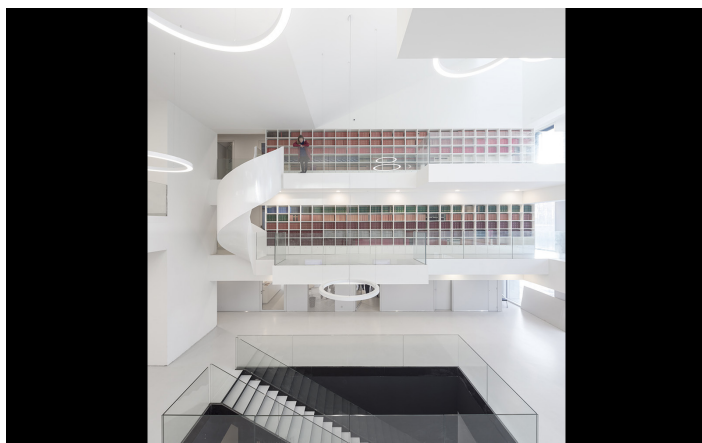
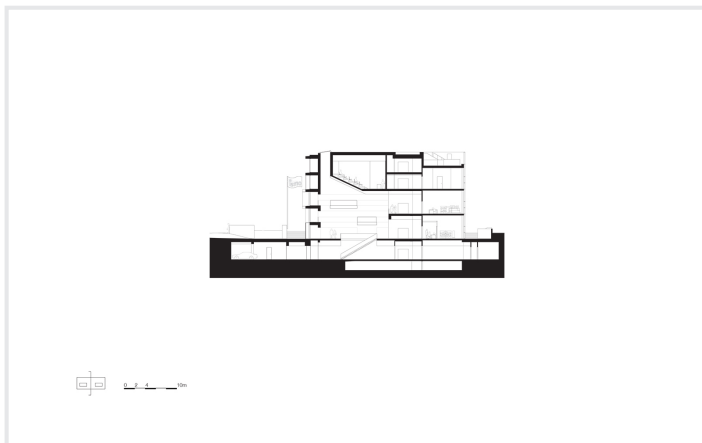
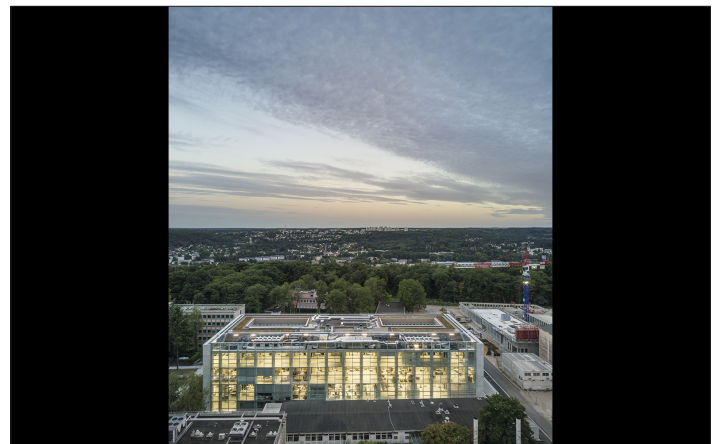
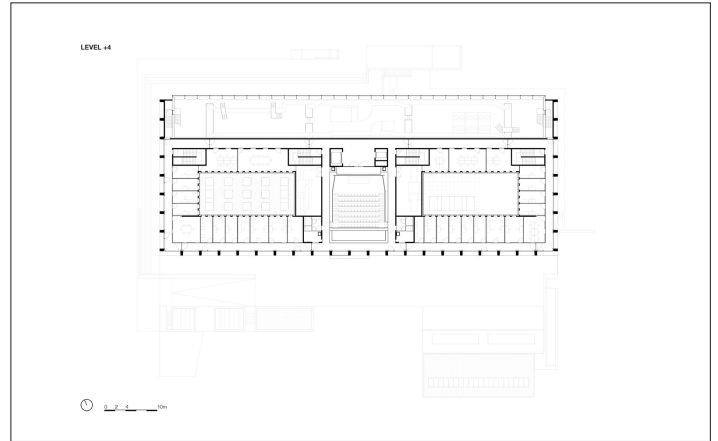
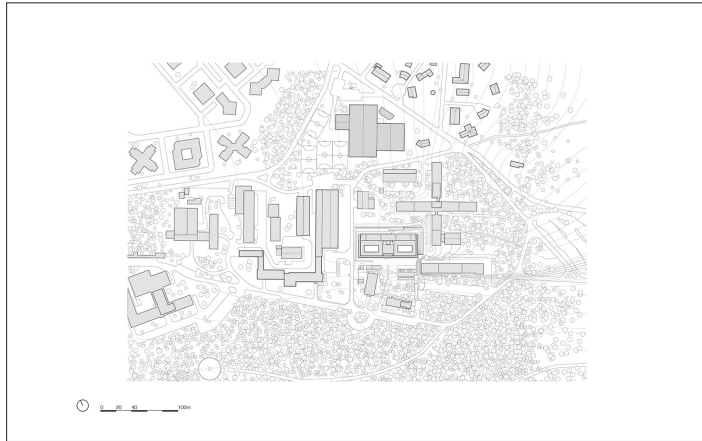
Project Team

Christophe Banderier,
Marc Coma, Aksel Coruh,
Sebastian van Damme,
Paolo Faleschini, Renata
Gilio, Walter Hoogerwerf,
Kees Kaan, Jan Teunis ten
Kate, Marco Lanna, Vincent
Panhuisen, Ismael Planelles
Naya, Ana Rivero Esteban,
Dikkie Scipio, Joeri Spijkers,
Koen van Tienen, Pauline
Trochu

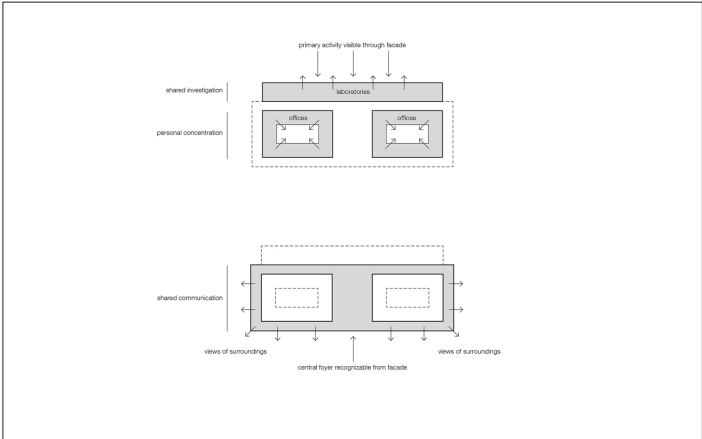
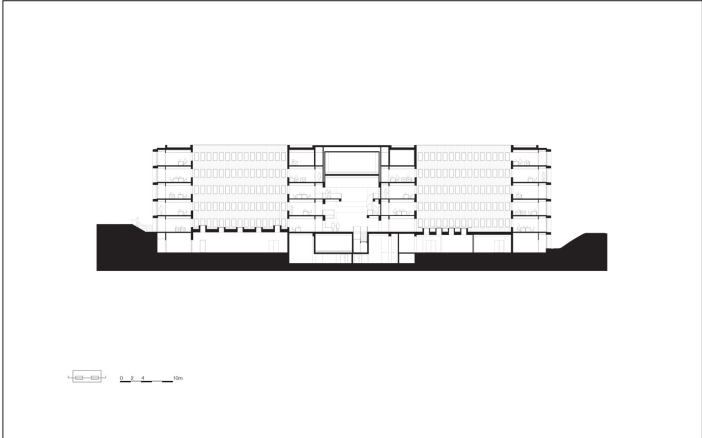


Robust and elegant, while essentially open in character, ISMO building is distinguished by a harmonic coexistence of nature and scientific research. It unites two architecturally expressed realms, housing theoretical and practical research, into a single entity. While the laboratories are situated along the north-facing side of the building behind a sleek curtain wall, the southern facade houses the office areas set around two spacious courtyards providing natural light. Grid like pattern of concrete posts and lintels extends from the south facade around the corners to the sides and reaches all the way to the end corners. Upon entering the building, the atrium unfolds all the way up to the roof with daylight flooding it through the facade and a large skylight. Above the atrium, a large auditorium hovers suspended from above. Aside the entrance, a library wall stretches over two levels, connected by an enclosed spiral steel staircase. Pointing upwards, rectangular balconies project into the space as comfortable settings for conversations and exchange of ideas.

Project Title



Project Title



Project Title

