

# ARQUUS One site

## Location

Zac Satory Ouest,  
Versailles, FR

## Client

ARQUUS

## Initiated

2019

## Size

28 000 sqm

## Project Team

Robin Cals, Marylène  
Gallon, Cristina Gonzalo  
Cuairàn, Kees Kaan, Jan  
Teunis ten Kate, Garrett  
McGill, Vincent Panhuysen,  
Dikkie Scipio, Joeri Spijkers,  
Frane Stancic, Sophie  
Twarog

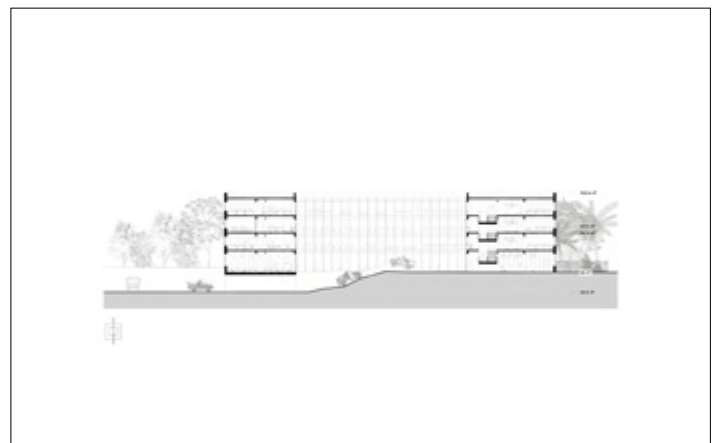
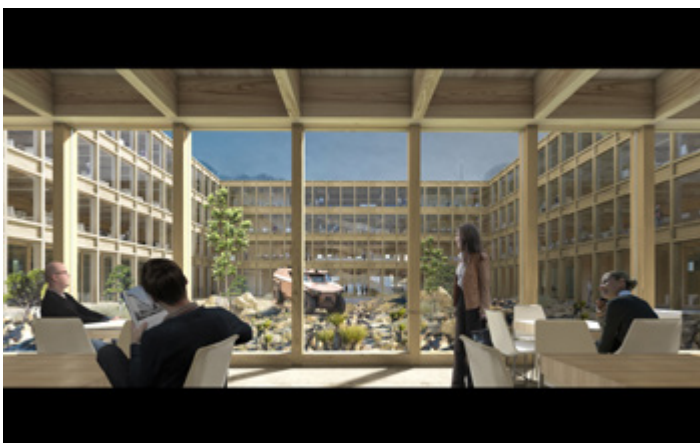
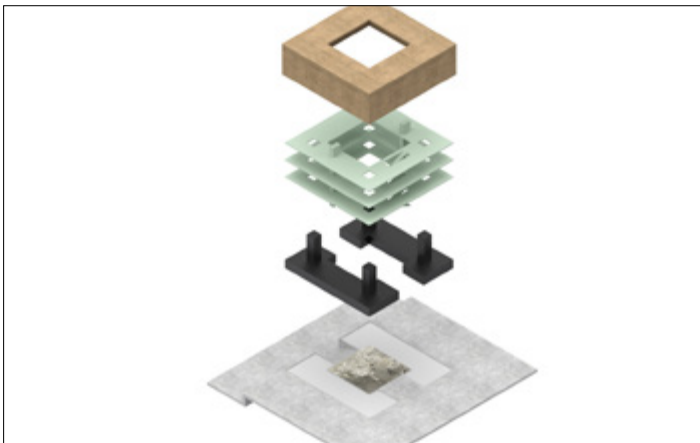
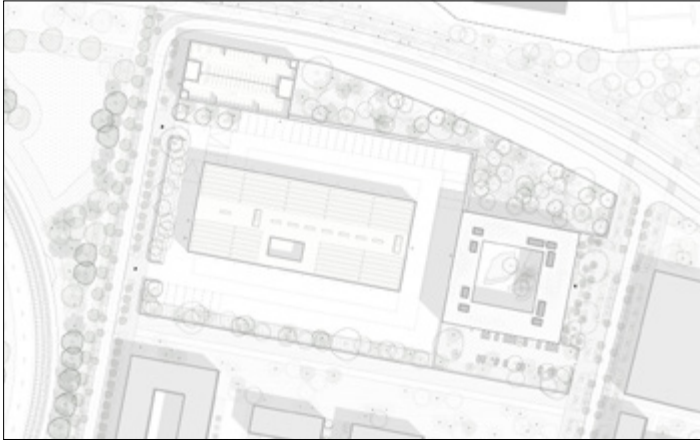
## Collaborators

Urban design: PRANLAS-  
DESCOURS architect &  
associates;  
Landscape: D'ICI LA  
paysage et territoires;  
Engineers: ALTO Ingénierie;  
Sustainability: ALTO Fluids;  
Structural engineers: EVP;  
Building economist: BMF  
Conseil



ARQUUS One site is a complex with facilities dedicated to production of military vehicles, located in an extraordinary urban and landscaped environment in Versailles, France. The project for the new Satory district appropriates this context and forges links with history and the territory by creating a common landscape, a hierarchical network of public, natural and built spaces. The ensemble of 3 buildings includes an office building, a central workshop facility and a garage all connected by a common plinth that facilitates logistics. Both the office building and the workshop are housed within robust envelopes, but their interior disposition is agile and flexible in anticipating the constraints of use: movement of the staff and machinery, comfort and well-being at work.

# ARQUUS One site



# ARQUUS One site

