

Arena Nilson Nelson

Location

SRPN - Brasília, DF, 70070-705, Brazil

Client

Arena BSB

Initiated

2020

Size

24 250 sqm

Project Team

Renata Gilio, Danielle Gregorio, Kees Kaan, Vincent Pauhuysen, Dikkie Scipio, Frane Stancic, Yang Zhang

Photos

Filippo Bolognese Images

Collaborators

Oderbrecht, Teeng Engenharia

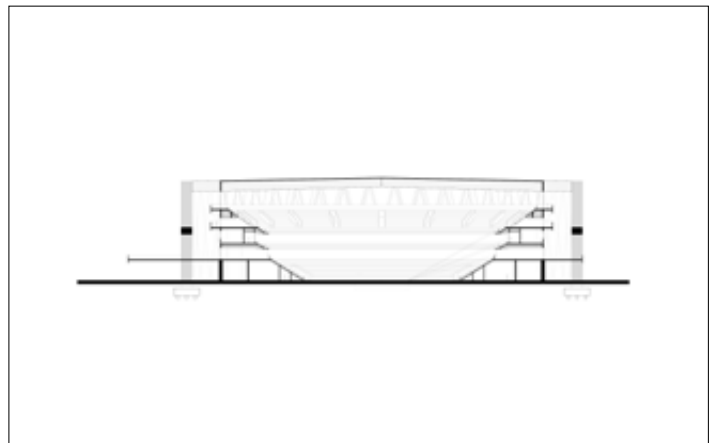
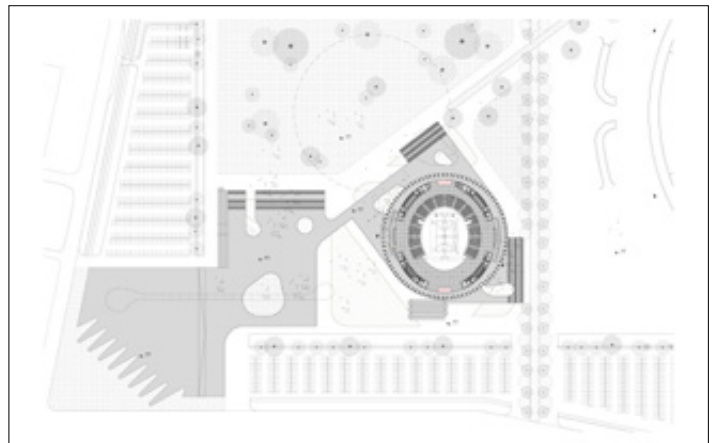
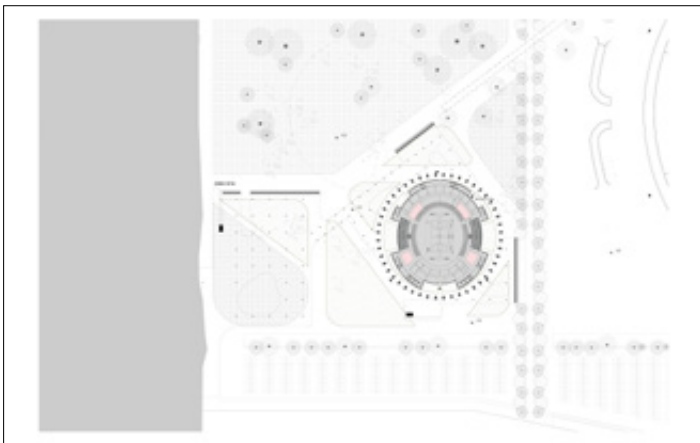
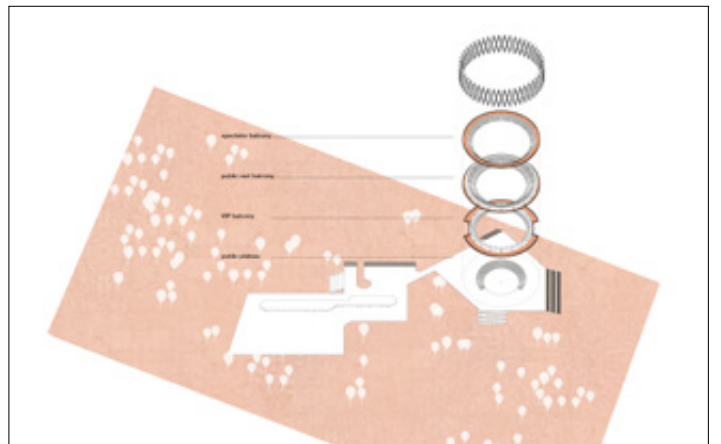
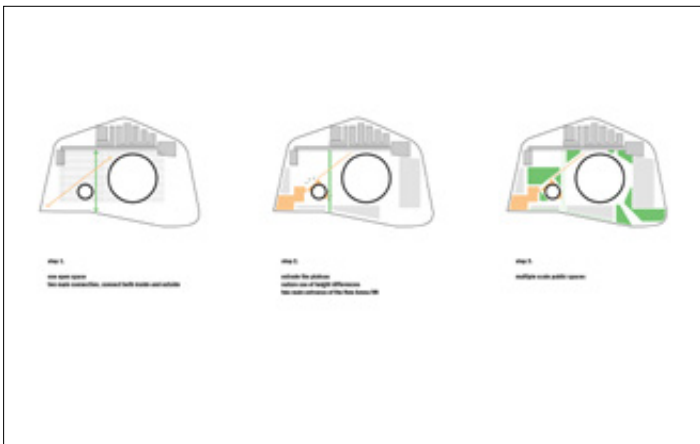
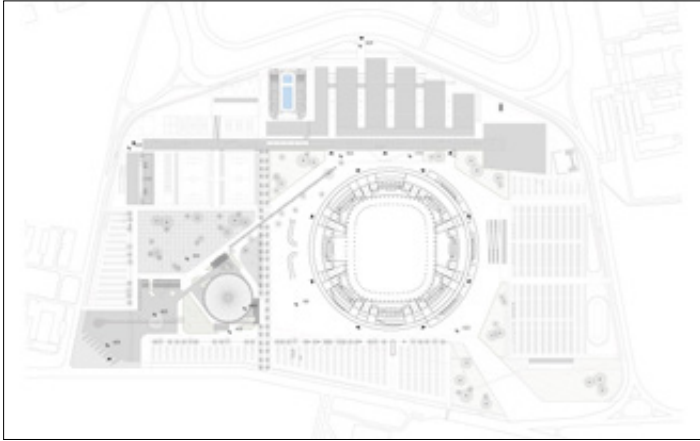


The new Arena Nilson Nelson will be located next to the world-famous Brasilia Monumental Axis, serving as a multifunctional gymnasium for sports, performances and other events. It sits between the Brazilian National Stadium and the new construction of the Boulevard Shopping Centre. These three entertainment venues will form a harmonious cluster in Brasilia's urban life.

As the "last major project on the Monumental Axis", the Arena NN's ambition is to create an appealing performance facility and an enjoyable public space as the new 'living room' for the city. The new building sits on a slope, connecting the public flow from the main axis to an elevated plateau. This connection naturally provides generous shaded public space on the lower level, embracing the outdoor performance plaza. The large prefab recycled concrete crosses on the outer façade create a memorable appearance from the Monumental Axis. On the inside, they make a triple-height, shaded outdoor space connected to the level of the public plateau.

Circulation areas extend to three balconies rising through the shaded outdoor space and giving views of the surrounding landscape. These public balconies are made out of rammed earth in a characteristic Brazilian highland Cerrado red colour, representing local culture and environmental significance. The building generates a vibrant public life nestled in a vivid landscape of local vegetation.

Arena Nilson Nelson



Arena Nilson Nelson

