

# Museum Paleis Het Loo

## Location

Koninklijk Park 16, 7315 JA  
Apeldoorn

## Client

Stichting Paleis Het Loo  
Nationaal Museum, Apeldoorn

## Initiated

2016

## Completion

2023

## Size

20.045 sqm

## Project Team

Valentina Bencic, Dennis Bruijn,  
Javier Cuartero, Sebastian van  
Damme, Katarzyna Ephraim,  
Paolo Faleschini, Christiaan  
Frankin, Michael Geensen,  
Aleksandra Gojnic, Julia  
Gousset, Narine Gyulkhasyan,  
Niels de Hart, Joost Harteveld,  
Walter Hoogerwerf, Martine  
Huijsmans, Kees Kaan, Antony  
Laurijsen, Nicki van Loon,  
Loes Martens, Marija Mateljan,  
Edyta Milczarek, Laura Ospina,  
Vincent Panhuysen, Dikkie  
Scipio, Floris Sikkel, Christian  
Sluijmer, Niels Vernooij, Roel  
Wijmans, Samara Zukoski

## Photos

Simon Menges,  
Sebastian van Damme

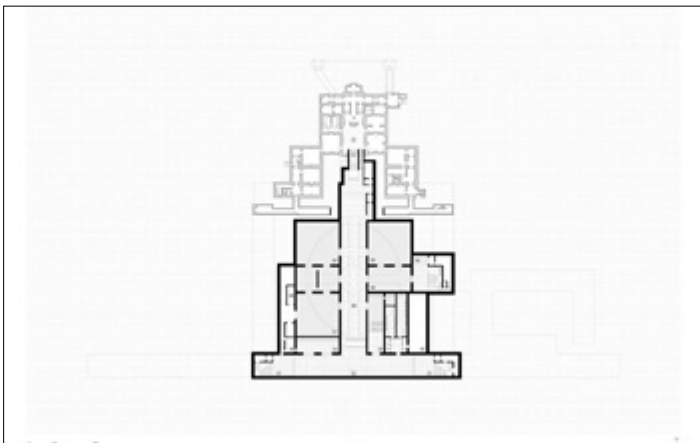
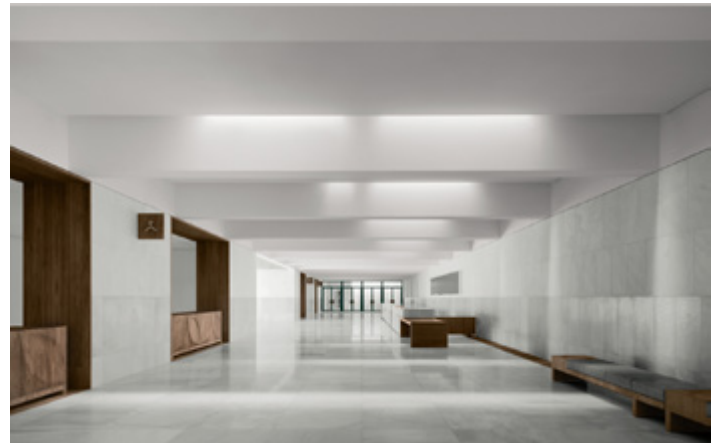
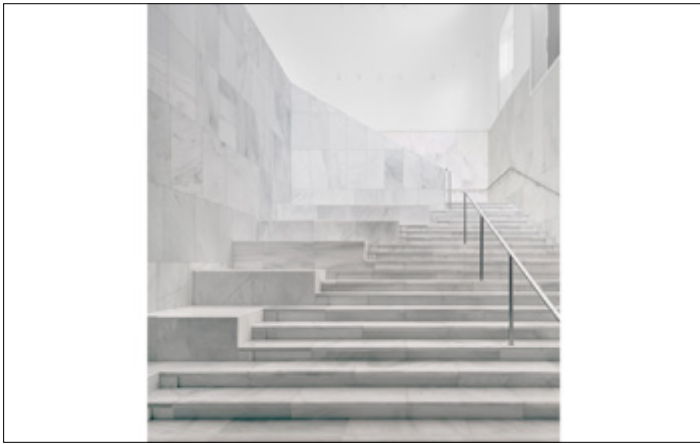
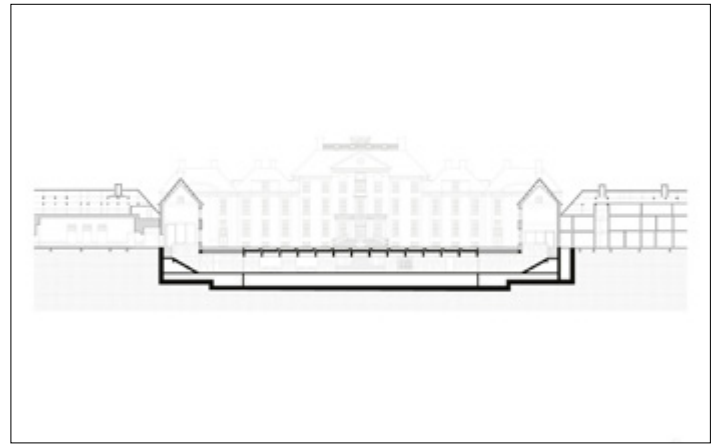
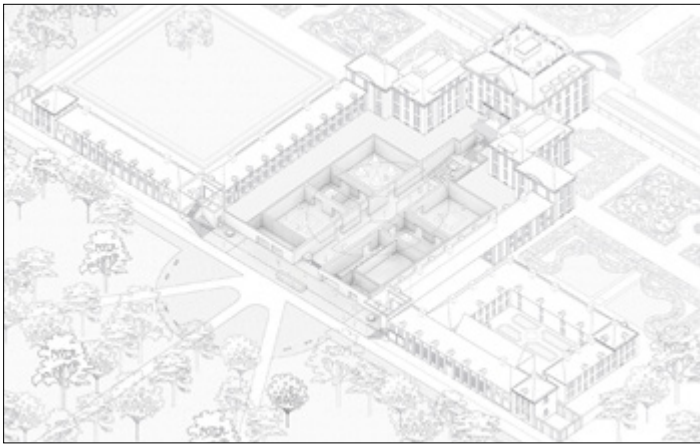
## Collaborators

Atelier Rick Tegelaar, BAM  
Bouw en Techniek - Integrale  
Projecten Oost, Basalt  
bouwadvies, Beersnielsen  
lichtontwerpers, Bouwbedrijf  
Van Laar, Copijn, DGMR,  
Draaijer en partners, Draisma  
bouw, EGM architects, Ensel  
staalkonstrukties, Euroliften,  
GrobEnzo, Harryvan,  
Heijmans Utiliteit en Infra, IGG  
bouweconomie, IGS Interior  
Glass Solutions, KOLEN  
Keramik en Natuursteen,  
Koninklijke Woudenberg,  
Kossmanndejong, Lakeman  
Liften, MAT Groep, Michels  
Parketvloeren, Oranjedak,  
Schuurmans Afbouwssystemen,  
Studio Linse, Studio Staak,  
TextielLab, Valstar Simonis, Van  
Hoogevest Architecten, Volker  
Staal en Funderingen, WSP  
Nederland, Zuid-Nederlandse  
Ramenfabriek, Zumtobel

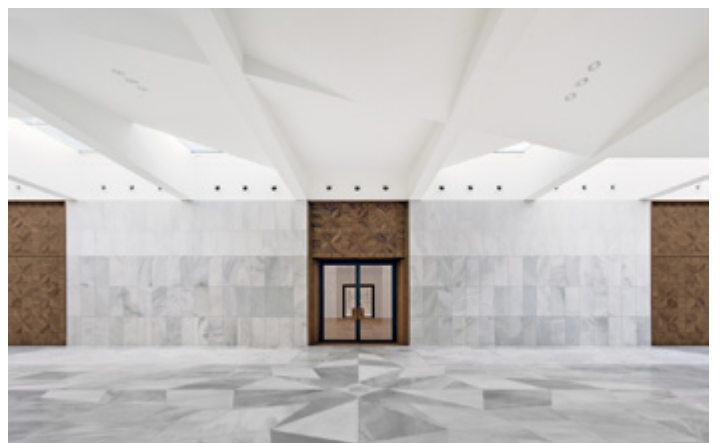
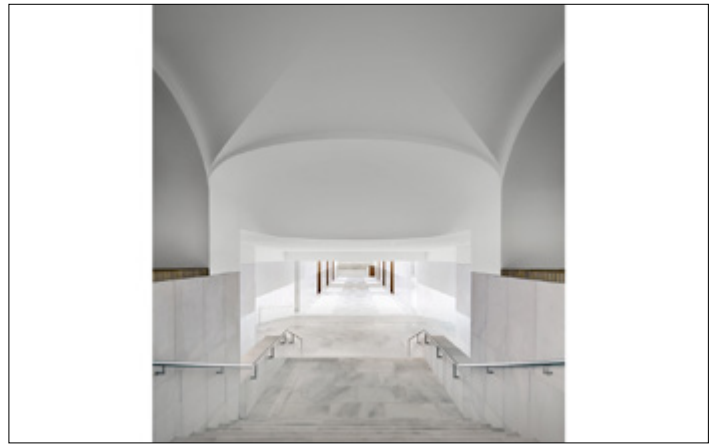
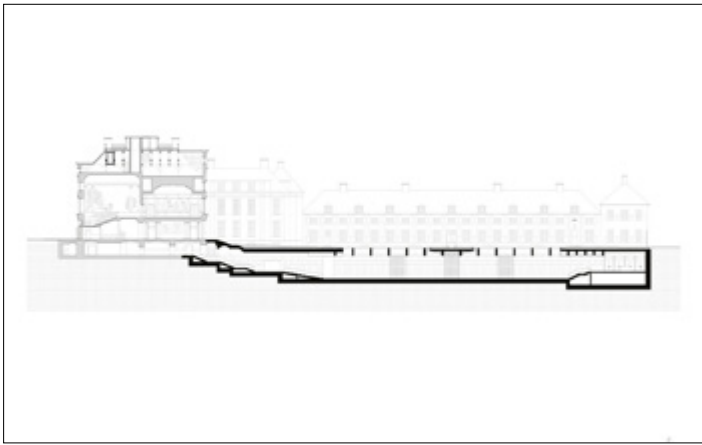


Paleis Het Loo, a baroque hunting palace on the outskirts of Apeldoorn, has undergone an ambitious transformation involving the addition of over 5000 square metres of new facilities and spaces, a careful restoration of the palace, and a meticulous asbestos removal process. Seamlessly integrated into the existing site, the extension is placed underground and a new water feature was incorporated as part of the design, maintaining the baroque composition of lush gardens and water elements. The Bassecour, a courtyard between the palace wings, has been transformed into a stunning space with a central fountain and glass surfaces adorned with natural stone and flowing water, reminiscent of the historic gardens. Serving as the roof of the new extension, the shallow ponds reflect the palace and allow daylight to filter through, creating a brilliant effect. Located at the ends of the palace wings, entry pavilions lead visitors down to the light-filled balcony and into the Grand Foyer, which serves as the central hub of the extension. The Grand Foyer maintains the symmetry of the baroque composition and connects visually with the historic building through a glass roof, while a large wind rose in the floor indicates the center of the extension and offers visitors different directions to explore. The extension features exhibition halls, a museum for children, and a permanent exhibition on the history of the Dutch royal family. As part of the intervention, the historic building underwent careful restoration to improve technology and climate control systems, and a new staircase was added to provide panoramic views of the grounds. The finishes in the new building are elegant and restrained, with textures and materials blending harmoniously. Walnut wood, marble with alternating sandblasted, honed, and polished surfaces, and opulent fabrics with metallic threads are used throughout, referencing the gardens and the ornate halls of the original palace.

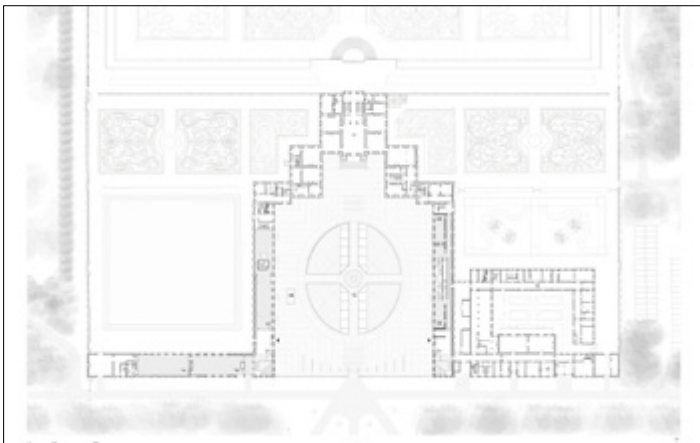
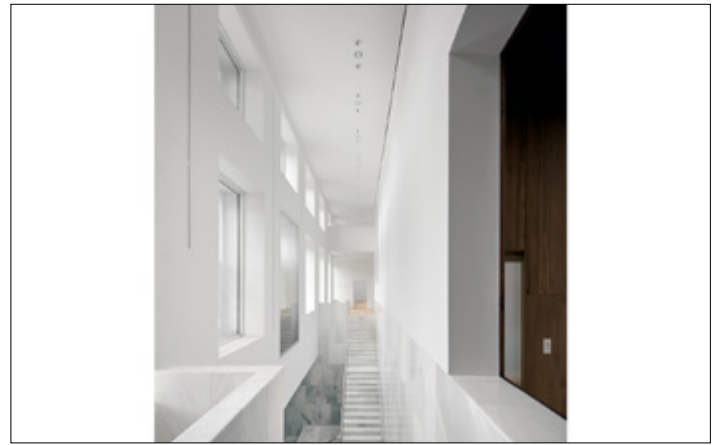
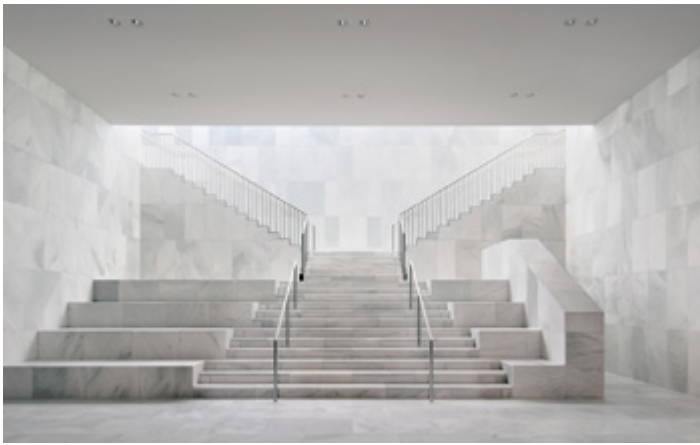
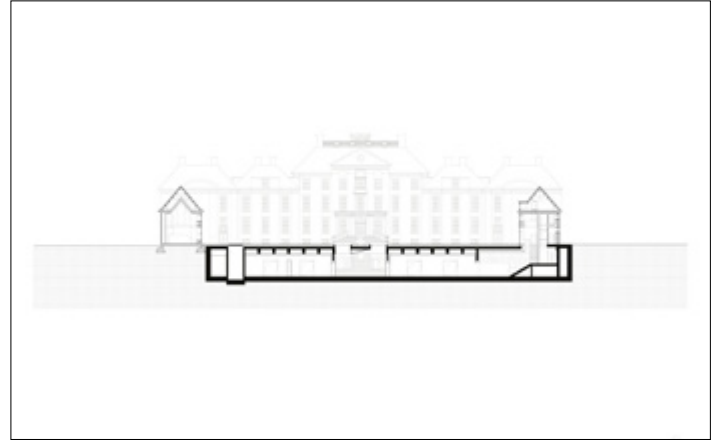
# Museum Paleis Het Loo



# Museum Paleis Het Loo



# Museum Paleis Het Loo



# Museum Paleis Het Loo

