

Strijp S - Matchbox

Location

Eindhoven, NL

Client

Trudo, Eindhoven

Initiated

2021

Size

4.800 sqm

Project Team

Koen Bosman, Timo Cardol,
Jorge Goncalves Correia,
Cristina Gonzalo Cuairán,
Javier Cuartero, Raluca
Firicel, Michael Geensen,
Narine Gyulkhasyan,
Aleksandar Hrib, Kees
Kaan, Jan Teunis ten
Kate, Moritz Kuhl, Renee
Meijer, Hana Mohar,
Hannes Ochmann,
Vincent Panhuysen, Romy
Raanhuis, Dikkie Scipio,
Frane Stancic, Yang Zang,
Samara Zukoski

Collaborators

Contractor: Stam + De
Koning Bouw, Eindhoven

Construction advisor: ABT
B.V., Delft / Adviesbureau
Lüning B.V., Arnhem

Building physics and fire
safety: ABT B.V., Delft

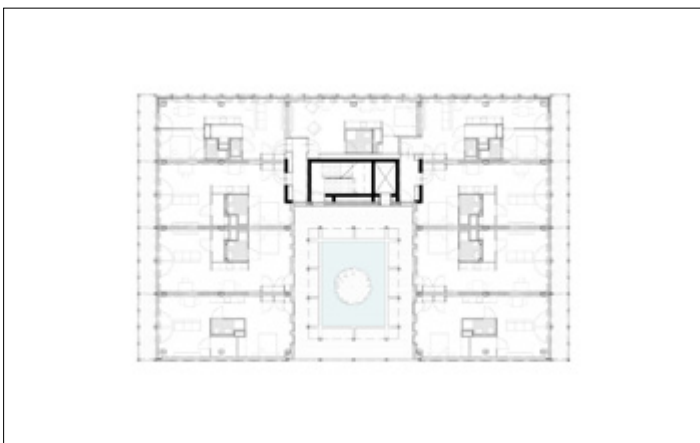
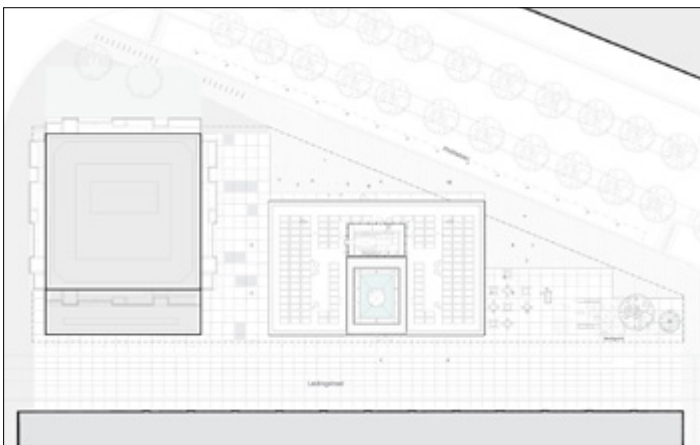
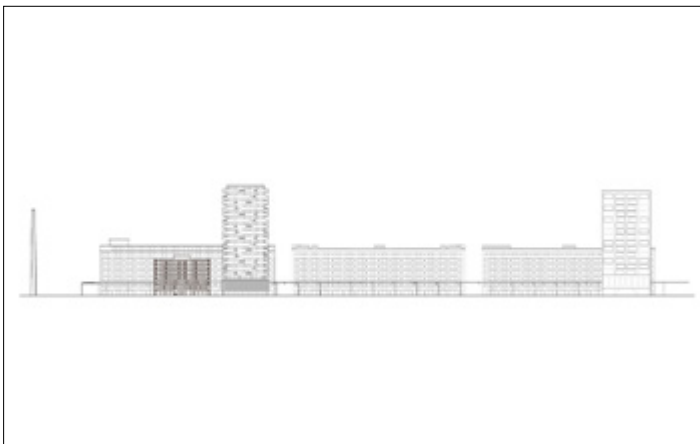
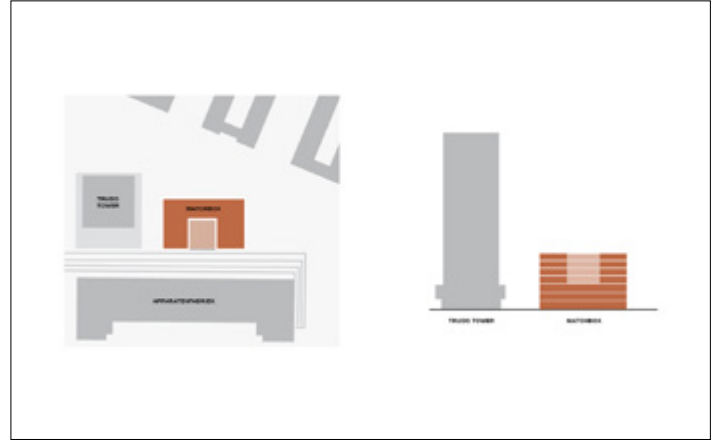
Installation advisor:
Visietech B.V., Almkerk



The Matchbox project embraces early modernism's practical and straightforward style, seamlessly blending into the former industrial area of Philips factories in Strijp-S. The clear rhythm of the exoskeleton grid, reminiscent of matches, has earned it the project's working title. In contrast to the surrounding concrete landscape, Matchbox introduces the warmth and softness of a timber grid system. Occupying a compact volume, the building acts as a connecting element between the industrial zone in the south, Leidingstraat that runs alongside it, and the new residential development in the northern part of the plot. It stands independently, facing the city, with all four sides equally emphasised.

The building features a fully timber construction with a concrete stability core. Offices are located on the ground floor, while apartments occupy levels 3 to 6, surrounding an inner courtyard. Reflecting the urban design principles of Strijp-S, Matchbox boasts a highly permeable and active ground level. Right from its inception, the project prioritises the use of bio-based materials with minimal or even negative environmental impact. The prominently displayed timber structure reduces the project's ecological footprint and enhances the overall urban environment. Additionally, integrated solar panels, rainwater collection systems, a green courtyard, and natural cross-ventilation create a healthy and sustainable work and living environment.

Strijp S - Matchbox



Strijp S - Matchbox

